



Latitude: 29.955325  
 Longitude: -90.087963

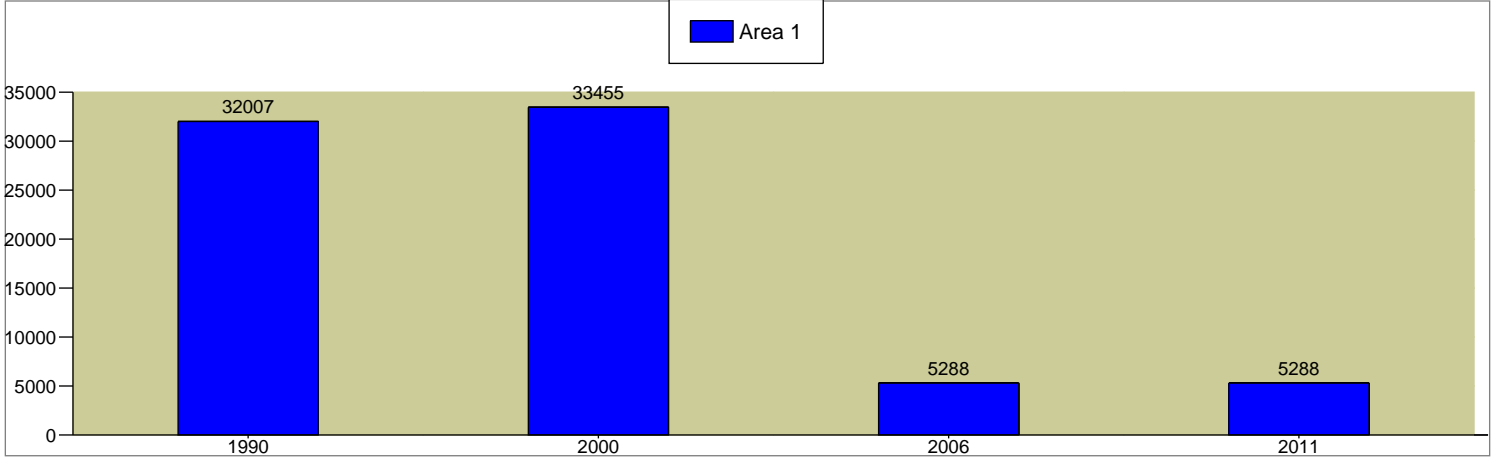
720 S Galvez St  
 New Orleans, LA 70119  
 Radius: 1.0 miles

720 S Galvez St  
 New Orleans, LA 70119  
 Radius: 3.0 miles

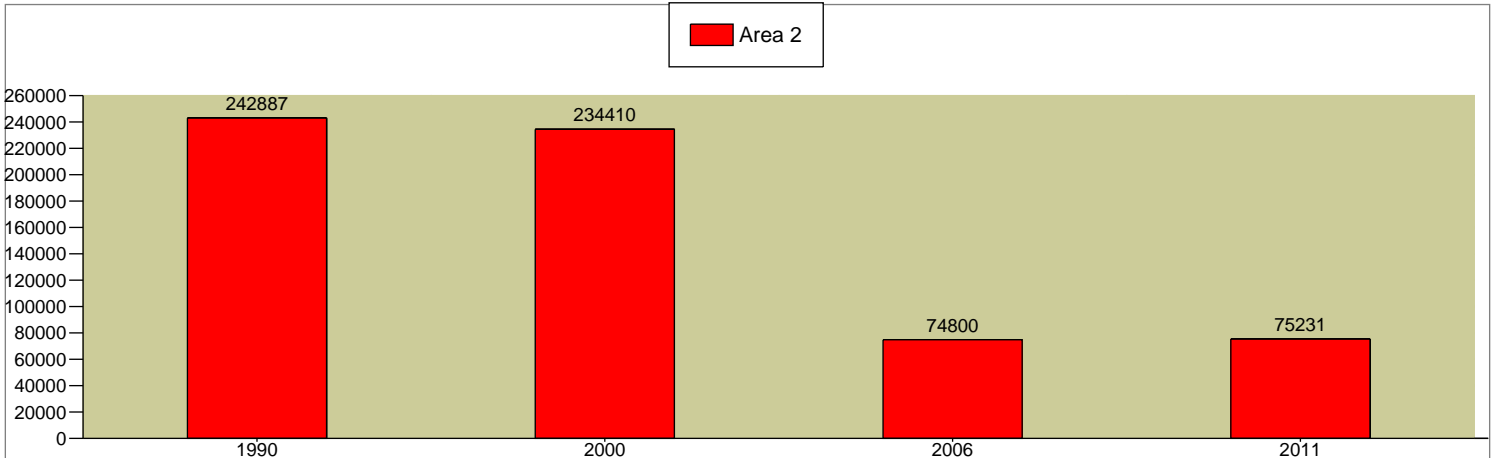
720 S Galvez St  
 New Orleans, LA 70119  
 Radius: 5.0 miles

2000 - 2006 Population Annual Rate	-25.56%	-16.7%	-13.74%
2006 - 2011 Population Annual Rate	0%	0.11%	0.88%

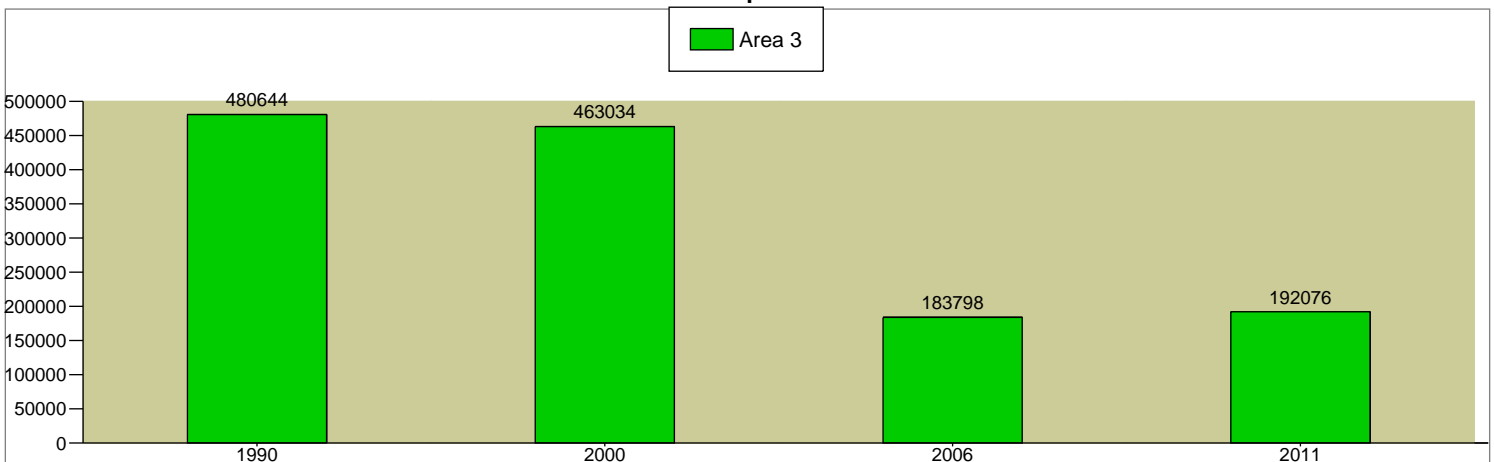
Total Population



Total Population



Total Population



Source: U.S. Bureau of the Census, 2000 Census of Population and Housing. ESRI converted 1990 Census data into 2000 geography. ESRI forecasts for 2006 and 2011.



Latitude: 29.955325  
 Longitude: -90.087963

720 S Galvez St New Orleans, LA 70119 Radius: 1.0 miles	720 S Galvez St New Orleans, LA 70119 Radius: 3.0 miles	720 S Galvez St New Orleans, LA 70119 Radius: 5.0 miles
---	---	---

**2000 Population by Sex**

Males	52.3%	47.9%	47.2%
Females	47.7%	52.1%	52.8%

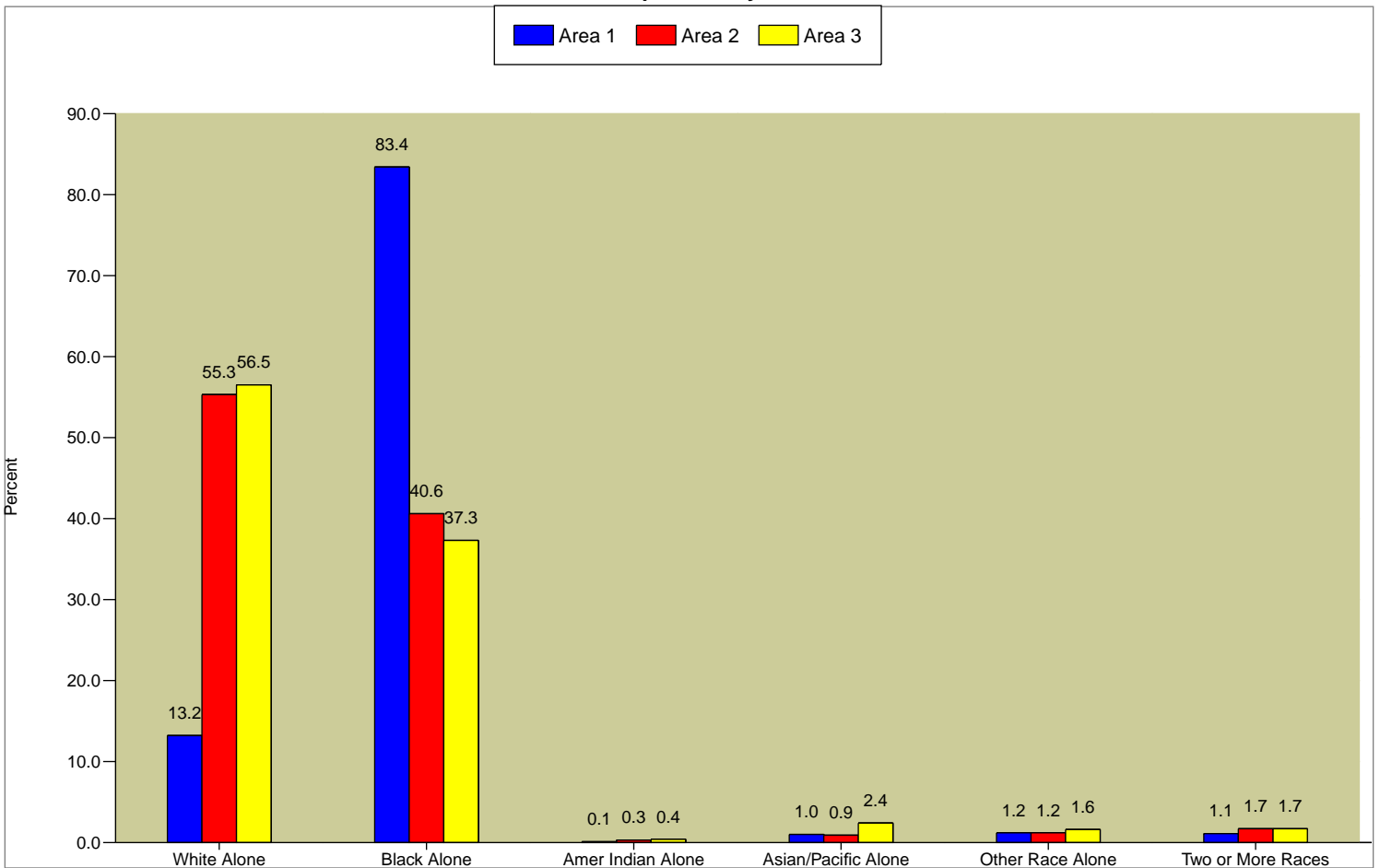
**2006 Population by Sex**

Males	56.0%	49.6%	48.1%
Females	44.0%	50.4%	51.9%

**2011 Population by Sex**

Males	56.0%	49.6%	48.1%
Females	44.0%	50.4%	51.9%

**2006 Population by Race**



2006 Hispanic Origin	3.8%	5.1%	5.8%
----------------------	------	------	------

**2000 Population 25+ by Educational Attainment**

Total	18,608	147,066	297,217
Less than 9th Grade	15.6%	9.2%	8.7%
9th - 12th Grade, No Diploma	38.1%	20.0%	18.0%
High School Graduate	23.0%	22.2%	24.8%
Some College, No Degree	15.8%	19.2%	20.5%
Associate Degree	1.1%	3.0%	3.3%
Bachelor's Degree	3.5%	14.7%	14.3%
Master's/Prof/Doctorate Degree	2.9%	11.8%	10.3%

Data Note: Persons of Hispanic Origin may be of any race.

Source: U.S. Bureau of the Census, 2000 Census of Population and Housing. ESRI forecasts for 2006 and 2011.



Latitude: 29.955325  
 Longitude: -90.087963

720 S Galvez St New Orleans, LA 70119 Radius: 1.0 miles	720 S Galvez St New Orleans, LA 70119 Radius: 3.0 miles	720 S Galvez St New Orleans, LA 70119 Radius: 5.0 miles
---	---	---

**2000 Population by Age**

Total	33,456	234,411	463,034
0 - 4	7.9%	6.4%	6.7%
5 - 9	9.2%	7.0%	7.1%
10 - 14	7.5%	6.8%	6.9%
15 - 19	9.1%	7.8%	7.4%
20 - 24	11.2%	9.1%	7.8%
25 - 34	16.4%	15.9%	14.8%
35 - 44	15.0%	14.8%	14.9%
45 - 54	10.3%	12.7%	13.0%
55 - 64	5.6%	7.7%	8.1%
65 - 74	4.3%	5.9%	6.6%
75 - 84	2.5%	4.0%	5.0%
85+	1.0%	1.7%	1.8%

**2006 Population by Age**

Total	5,288	74,798	183,799
0 - 4	6.1%	5.5%	6.5%
5 - 9	5.9%	5.1%	5.9%
10 - 14	5.7%	5.2%	6.1%
15 - 19	14.7%	8.8%	7.2%
20 - 24	12.9%	11.0%	8.5%
25 - 34	16.0%	16.7%	15.1%
35 - 44	14.6%	13.6%	13.7%
45 - 54	10.5%	13.5%	14.0%
55 - 64	5.9%	9.2%	9.8%
65 - 74	4.1%	5.6%	6.1%
75 - 84	2.6%	3.9%	5.1%
85+	0.9%	1.9%	2.1%

**2011 Population by Age**

Total	5,288	75,232	192,079
0 - 4	6.1%	5.5%	6.4%
5 - 9	5.9%	5.1%	5.9%
10 - 14	5.7%	5.2%	6.0%
15 - 19	14.7%	8.7%	7.1%
20 - 24	12.9%	10.9%	8.2%
25 - 34	16.0%	16.8%	14.7%
35 - 44	14.6%	13.5%	13.4%
45 - 54	10.5%	13.5%	14.1%
55 - 64	5.9%	9.3%	10.7%
65 - 74	4.1%	5.7%	6.4%
75 - 84	2.6%	3.9%	4.8%
85+	0.9%	1.9%	2.4%

**Median Age**

2000	27.8	32.9	34.5
2006	27.7	33.5	35.6
2011	27.7	33.5	36.4

Source: U.S. Bureau of the Census, 2000 Census of Population and Housing. ESRI forecasts for 2006 and 2011.



Latitude: 29.955325

Longitude: -90.087963

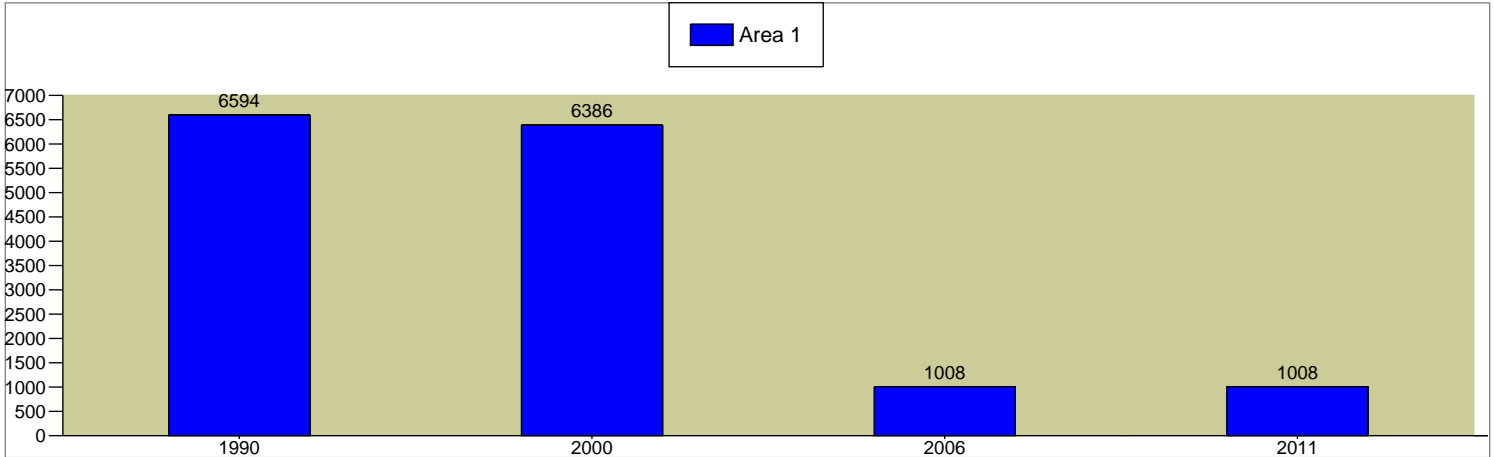
720 S Galvez St  
New Orleans, LA 70119  
Radius: 1.0 miles

720 S Galvez St  
New Orleans, LA 70119  
Radius: 3.0 miles

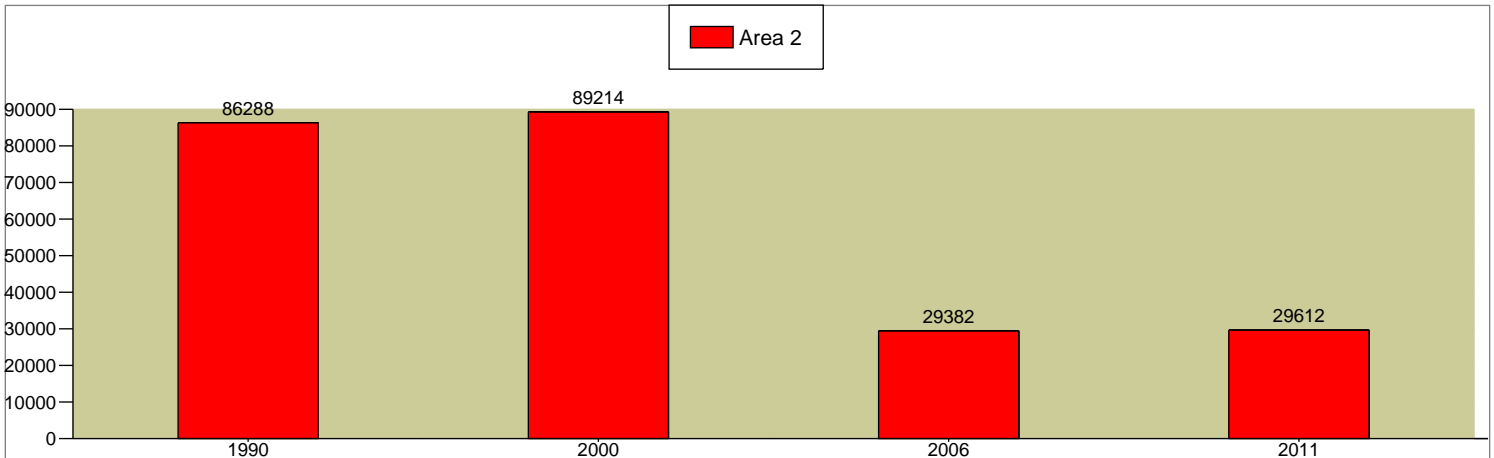
720 S Galvez St  
New Orleans, LA 70119  
Radius: 5.0 miles

2000 - 2006 Civilian Employed Population 16+ Annual Rate	-25.58%	-16.28%	-13.45%
2006 - 2011 Civilian Employed Population 16+ Annual Rate	0%	0.16%	1.13%

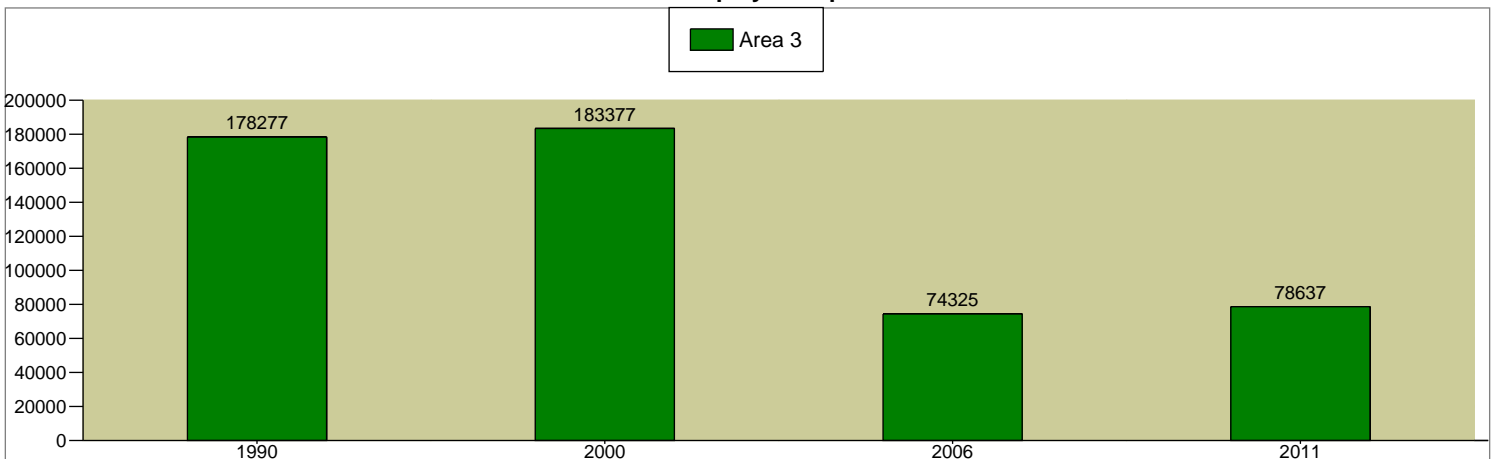
Total Civilian Employed Population 16+



Total Civilian Employed Population 16+



Total Civilian Employed Population 16+



Source: U.S. Bureau of the Census, 2000 Census of Population and Housing. ESRI converted 1990 Census data into 2000 geography. ESRI forecasts for 2006 and 2011.



Latitude: 29.955325  
 Longitude: -90.087963

720 S Galvez St New Orleans, LA 70119 Radius: 1.0 miles	720 S Galvez St New Orleans, LA 70119 Radius: 3.0 miles	720 S Galvez St New Orleans, LA 70119 Radius: 5.0 miles
---	---	---

**2000 Employed Population 16+ by Industry**

Total	6,385	89,214	183,378
Agriculture/Mining	0.8%	0.8%	1.2%
Construction	5.2%	5.1%	5.9%
Manufacturing	5.8%	4.3%	5.7%
Wholesale Trade	2.4%	2.4%	3.0%
Retail Trade	9.2%	9.7%	10.1%
Transportation/Utilities	6.8%	4.5%	5.1%
Information	0.8%	2.5%	2.3%
Finance/Insurance/Real Estate	3.5%	5.3%	6.0%
Services	60.4%	60.6%	55.3%
Public Administration	5.1%	4.8%	5.3%

**2006 Employed Population 16+ by Industry**

Total	1,008	29,382	74,325
Agriculture/Mining	0.6%	0.7%	1.1%
Construction	7.7%	5.1%	6.7%
Manufacturing	4.1%	2.9%	4.5%
Wholesale Trade	2.5%	2.4%	3.7%
Retail Trade	10.5%	9.6%	11.2%
Transportation/Utilities	5.1%	3.9%	4.3%
Information	0.4%	1.6%	1.5%
Finance/Insurance/Real Estate	1.8%	6.4%	7.1%
Services	61.8%	62.3%	54.5%
Public Administration	5.6%	5.1%	5.4%

**2000 Employed Population 16+ by Occupation**

Total	6,384	89,215	183,380
White Collar	42.6%	60.8%	60.5%
Management/Business/Financial	3.2%	10.7%	11.3%
Professional	12.0%	26.0%	23.6%
Sales	10.4%	11.1%	11.2%
Administrative Support	16.9%	13.0%	14.4%
Services	36.1%	24.0%	21.2%
Blue Collar	21.3%	15.3%	18.2%
Farming/Forestry/Fishing	0.5%	0.1%	0.2%
Construction/Extraction	5.5%	4.4%	5.1%
Installation/Maintenance/Repair	1.5%	1.8%	2.8%
Production	6.0%	4.0%	4.6%
Transportation/Material Moving	7.7%	4.9%	5.5%

**2006 Employed Population 16+ by Occupation**

Total	1,009	29,382	74,326
White Collar	36.1%	62.6%	61.1%
Management/Business/Financial	3.0%	12.1%	12.4%
Professional	12.0%	28.0%	23.3%
Sales	9.7%	11.6%	12.6%
Administrative Support	11.4%	10.9%	12.8%
Services	43.3%	24.4%	21.3%
Blue Collar	20.6%	13.1%	17.6%
Farming/Forestry/Fishing	0.7%	0.1%	0.2%
Construction/Extraction	7.8%	4.4%	5.8%
Installation/Maintenance/Repair	1.2%	1.6%	2.9%
Production	4.1%	2.8%	3.6%
Transportation/Material Moving	6.8%	4.2%	5.0%

Data Note: Detail may not sum to totals due to rounding.

Source: U.S. Bureau of the Census, 2000 Census of Population and Housing. ESRI forecasts for 2006 and 2011.



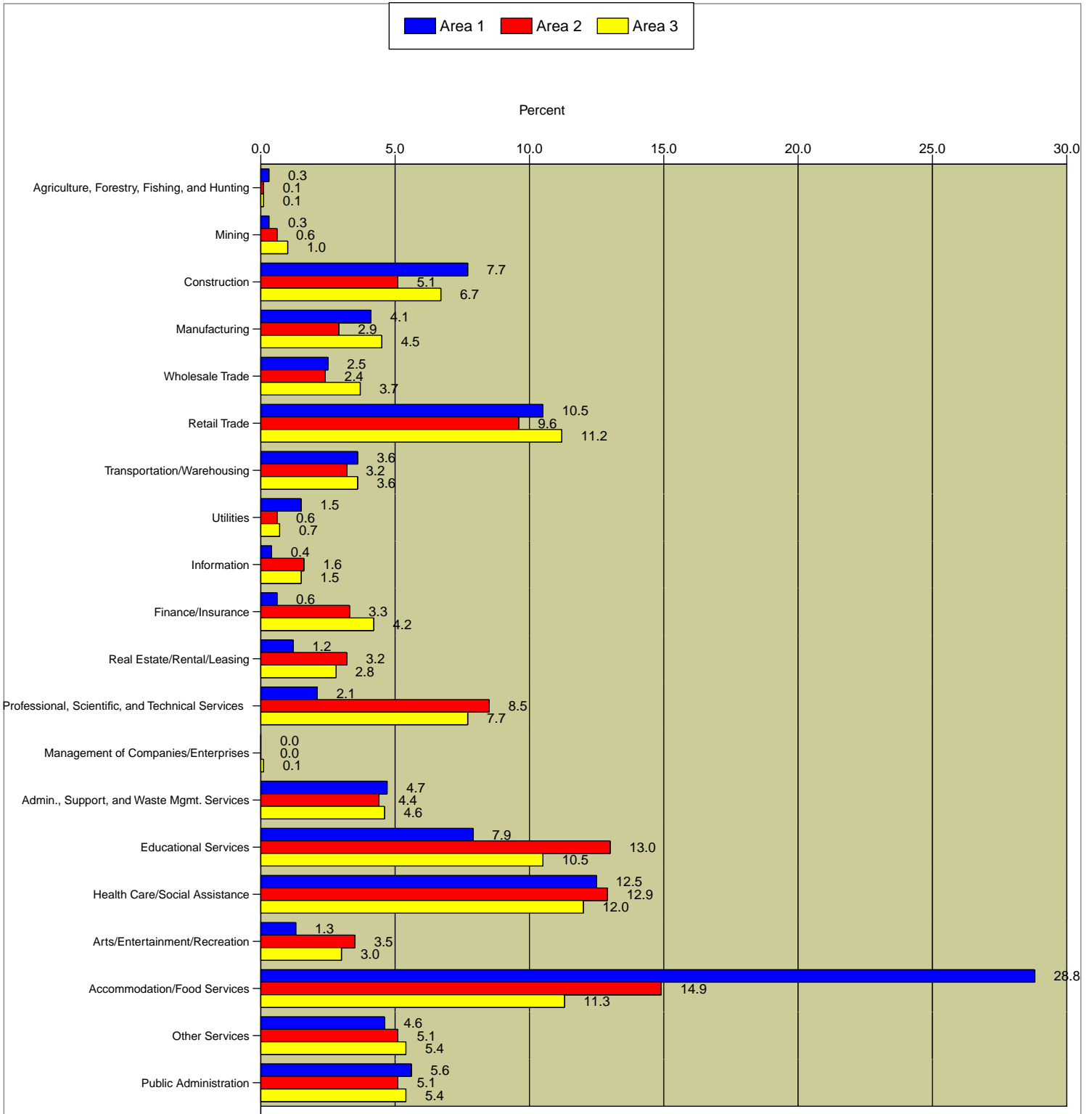
Latitude: 29.955325  
 Longitude: -90.087963

720 S Galvez St  
 New Orleans, LA 70119  
 Radius: 1.0 miles

720 S Galvez St  
 New Orleans, LA 70119  
 Radius: 3.0 miles

720 S Galvez St  
 New Orleans, LA 70119  
 Radius: 5.0 miles

2006 Employed Civilian Population 16+ by Industry



Data Note: Industry descriptions based on 2000 Census of Population and Housing definitions.

Source: ESRI forecasts for 2006.



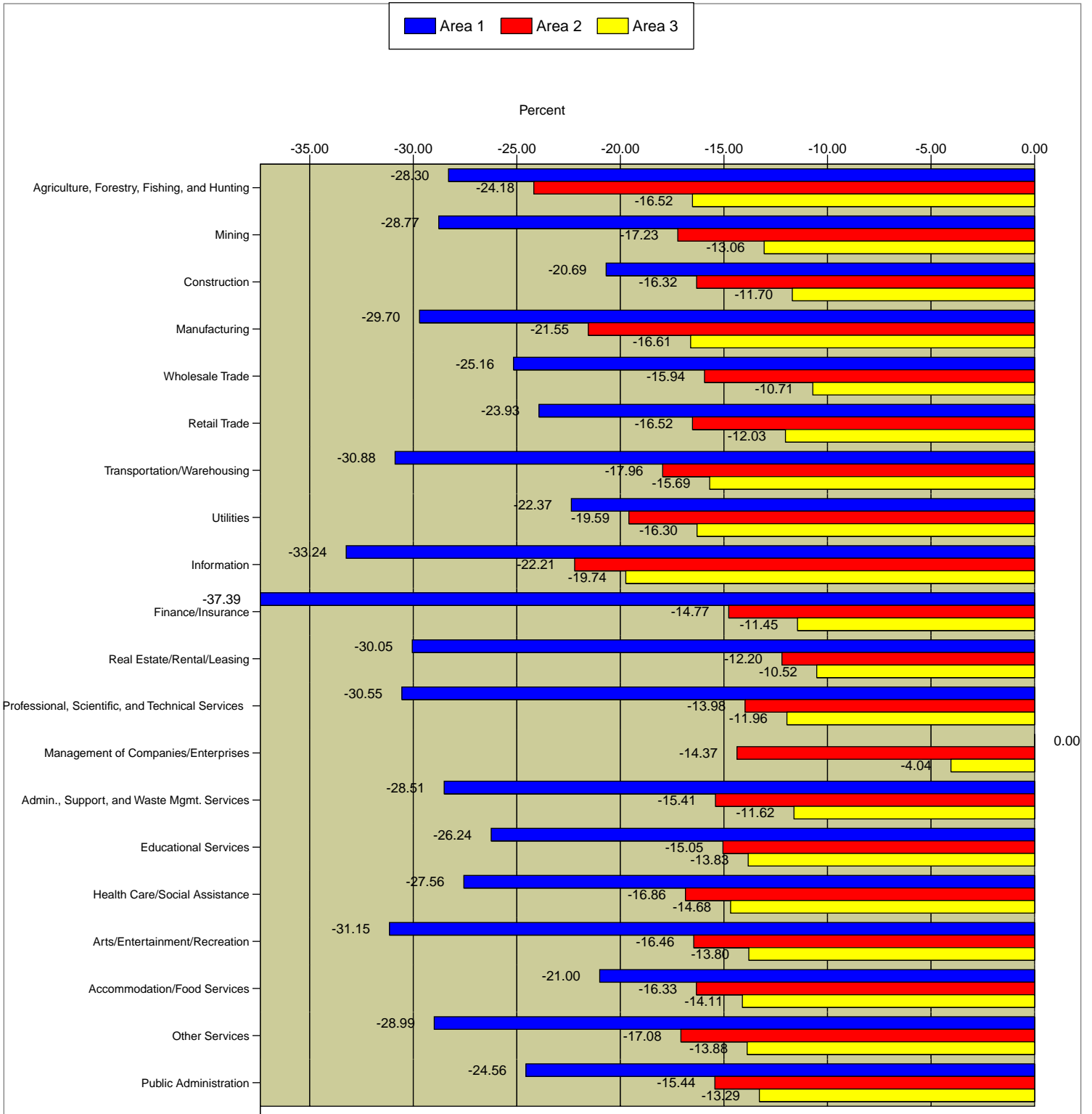
Latitude: 29.955325  
 Longitude: -90.087963

720 S Galvez St  
 New Orleans, LA 70119  
 Radius: 1.0 miles

720 S Galvez St  
 New Orleans, LA 70119  
 Radius: 3.0 miles

720 S Galvez St  
 New Orleans, LA 70119  
 Radius: 5.0 miles

2000 - 2006 Population by Industry Annual Rate



Data Note: Industry descriptions based on 2000 Census of Population and Housing definitions.

Source: ESRI forecasts for 2006.



Latitude: 29.955325  
 Longitude: -90.087963

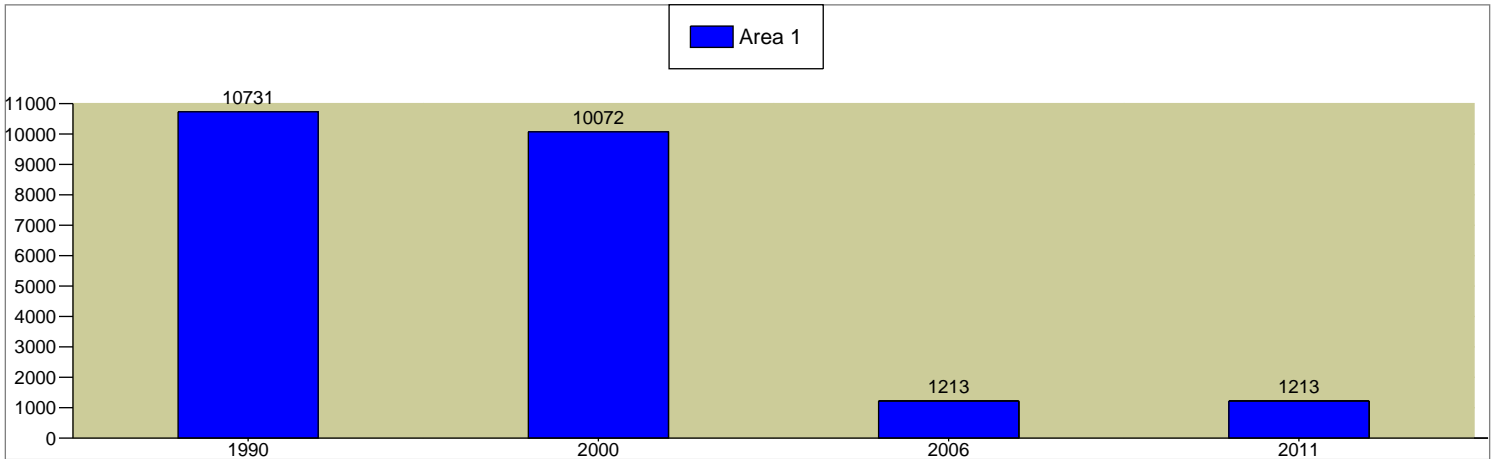
720 S Galvez St  
 New Orleans, LA 70119  
 Radius: 1.0 miles

720 S Galvez St  
 New Orleans, LA 70119  
 Radius: 3.0 miles

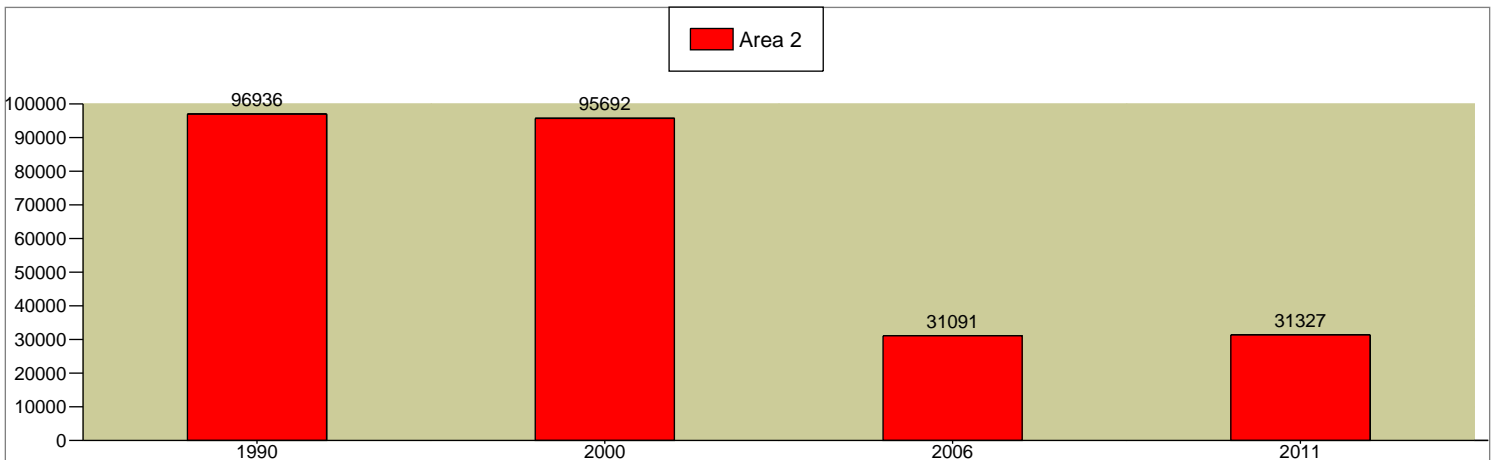
720 S Galvez St  
 New Orleans, LA 70119  
 Radius: 5.0 miles

2000 - 2006 Households Annual Rate	-28.73%	-16.46%	-13.42%
2006 - 2011 Households Annual Rate	0%	0.15%	1.38%

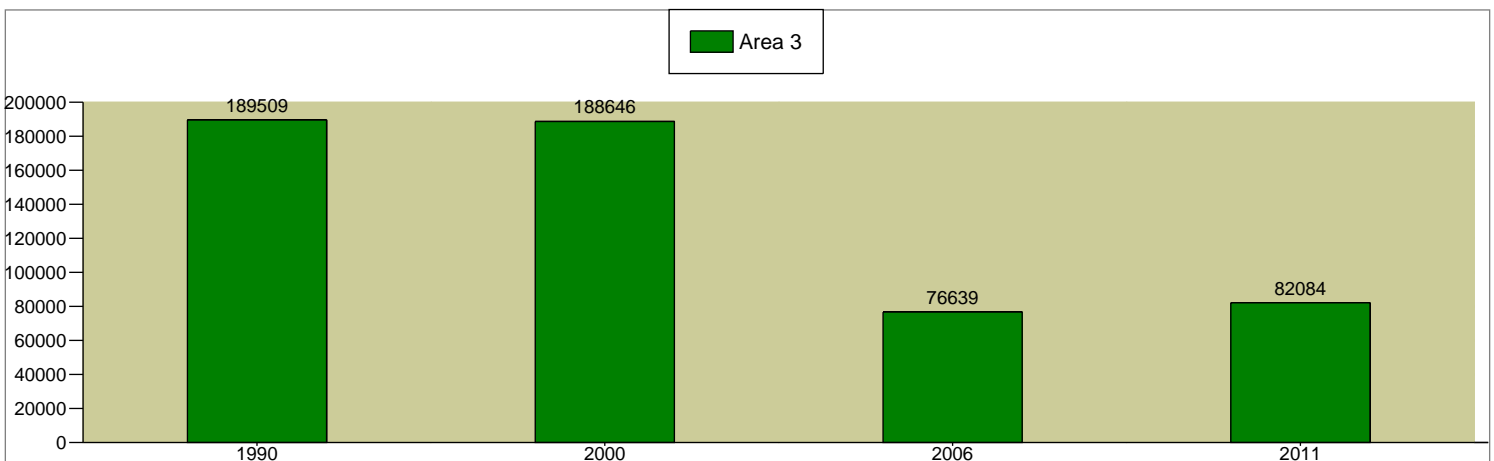
Total Households



Total Households



Total Households



Source: U.S. Bureau of the Census, 2000 Census of Population and Housing. ESRI converted 1990 Census data into 2000 geography. ESRI forecasts for 2006 and 2011.



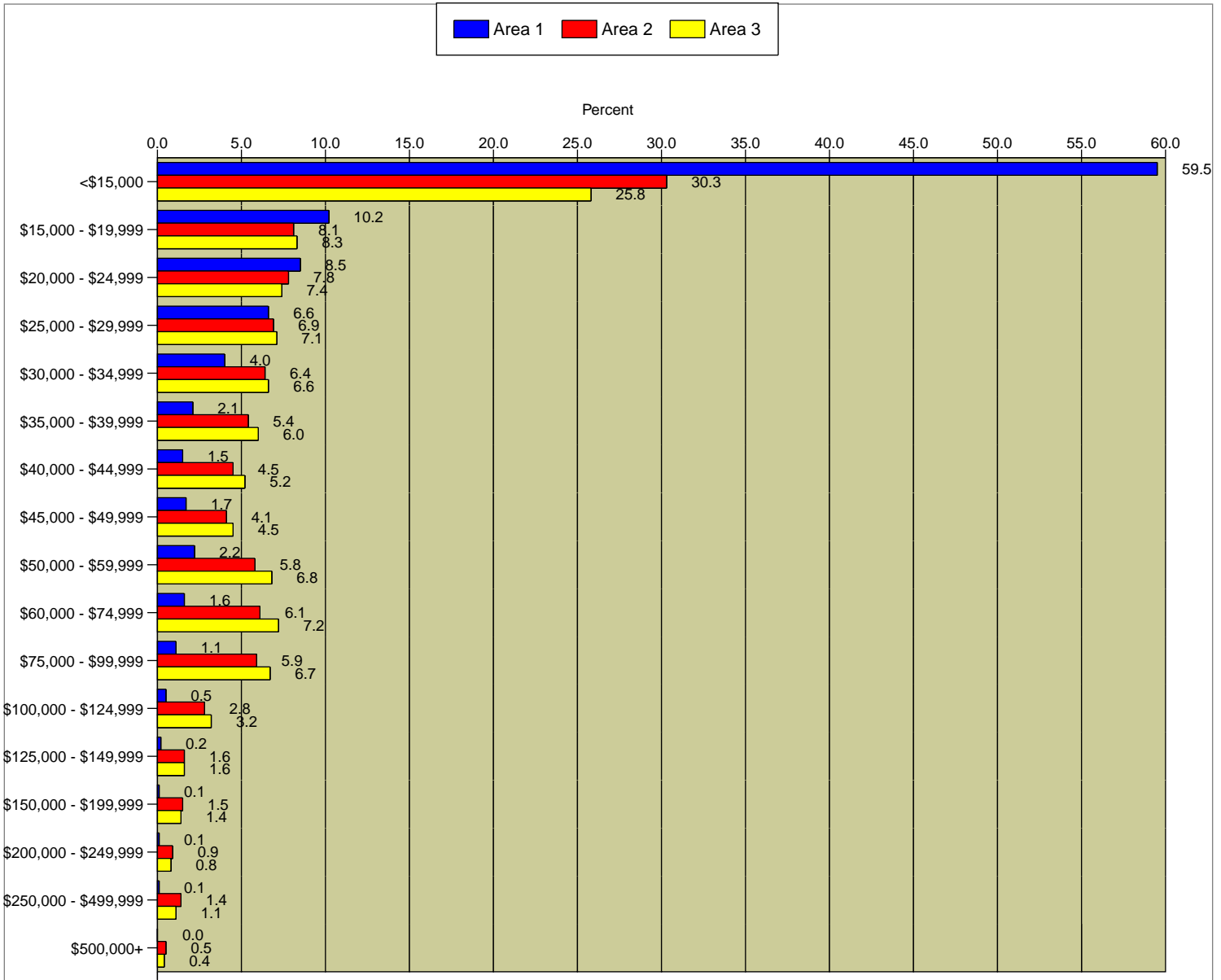
Latitude: 29.955325  
Longitude: -90.087963

720 S Galvez St  
New Orleans, LA 70119  
Radius: 1.0 miles

720 S Galvez St  
New Orleans, LA 70119  
Radius: 3.0 miles

720 S Galvez St  
New Orleans, LA 70119  
Radius: 5.0 miles

2006 Household Income



Median Household Income

Year	Area 1	Area 2	Area 3
2000	\$10,248	\$22,508	\$26,749
2006	\$11,529	\$27,560	\$30,948
2011	\$11,529	\$27,745	\$33,070

Period	Area 1	Area 2	Area 3
2000 - 2006 Median Household Income Annual Rate	1.9%	3.29%	2.36%
2006 - 2011 Median Household Income Annual Rate	0%	0.13%	1.34%

2006 Median Net Worth	Area 1	Area 2	Area 3
	\$11,851	\$25,194	\$35,345

Data Note: Detail may not sum to totals due to rounding. Income represents annual income for the preceding year. Income for 2006 and 2011 is expressed in current dollars, including an adjustment for inflation.

Source: U.S. Bureau of the Census, 2000 Census of Population and Housing. ESRI forecasts for 2006 and 2011.